

External Dosing KIT

SAFETY INSTRUCTIONS



The safety warnings on the Installation manual must be followed. Read them before servicing the washer.



The access to machine configuration is restricted to the Authorised Service Technicians.



WARNING!

Before attempting any service or inspection of the washing machine:

- **COMPLETELY** disconnect the machine from the original power source and check for accidental reconnection. Moving the **ON** switch to the OFF position is not sufficient.
- Wait a minimum of (5) five minutes after disconnection to ensure the elimination of residual voltage within the machine.
- Close and mechanically interlock the water supply valves and check that machine has **COMPLETELY** drained, parts have cooled down and that no pieces are in movement through inertia.

Failure to comply with this warning may result in serious injury.

1. External dosing

1.1 Introduction

The external dosing system is very useful in laundries to save time, but it needs a little infrastructure of tanks and a pumping system for the products.

The GIRBAU kit of external dosing allows you to easily replace the dosing system from the dispenser in the washing machine, through a product dosing system from external tanks. This kit provides the necessary elements to the machine for a fast coupling of the external dosing system.

Elements provided by the GIRBAU kit of external dosing:

- Electrical wiring to activate the pumping system.
- Four connection points for the hoses of the dosing product.

1.2 External dosing kit

1.2.1 Tools needed

- Wrench 10 mm (0,4 inch.)
- Torx driver 20 x 100 mm.
- Small screw-driver.

1.2.2 Elements of the external dosing kit

- 1 Dosing relay board
- 1 Control wiring for the dosing relay board
- 4 Supports for the dosing relay board
- 4 Jointing screw for the dosing product hoses fitting
- 4 Nuts to fix the jointing screws
- 4 Hoses for the internal connection of the machine.
- 8 Clamps to connect the internal Hoses.
- 4 Conic tube caps.

1.2.3 Installation of the dosing kit

1. Disconnect and mechanically lock the external automatic switch.
2. Open machine front panel with a key.
3. Carefully remove screws A and B with a 10-mm wrench, trying not to damage the microprocessor board (**fig. 1**)

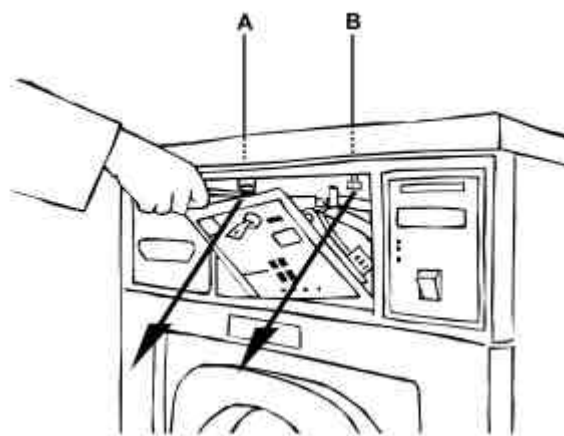


fig. 1

4. Make sure that no plugs have been disconnected from the board when you have removed the two screws.
5. Close the front part of the machine with the wrench.
6. Remove the top cover, slightly pushing it back.
7. Remove the four plastic caps (**fig. 2,C**) and keep them in a safe place.

fig. 4

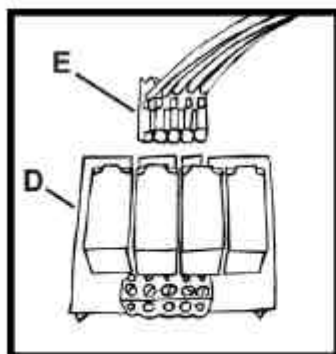
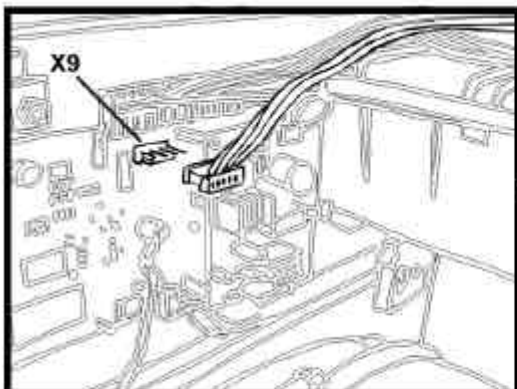


fig. 3

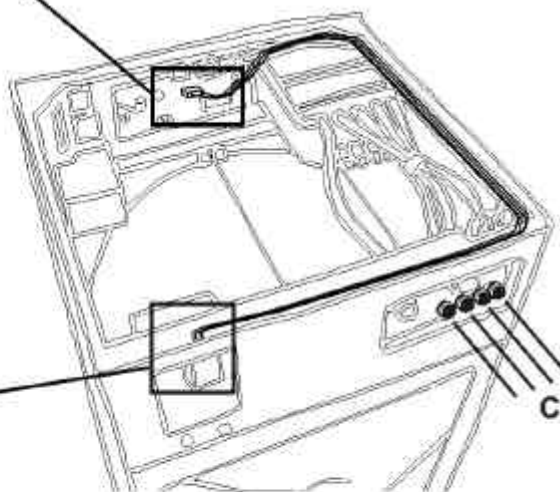


fig. 2

8. Remove the dispenser drawer, disassembling the two "stops" (fig. 5).

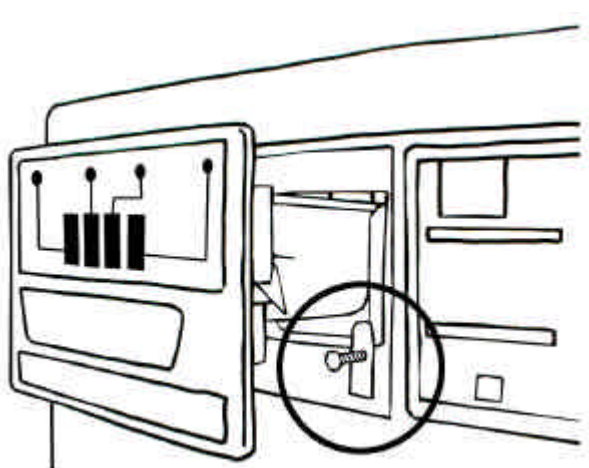


fig. 5

9. Drill the four dosing entry holes with a 6,5-mm (1/4 inch) diameter drill, from the rear part of the dispenser (fig. 6). Do not try to make the holes by hitting or pressing.

! DO NOT TRY TO DRILL HITTING OR TIGHTENING.

10. Make sure that there is not any swarf inside the dispenser.
11. Place the dispenser drawer in its original location, attaching it with two screws.

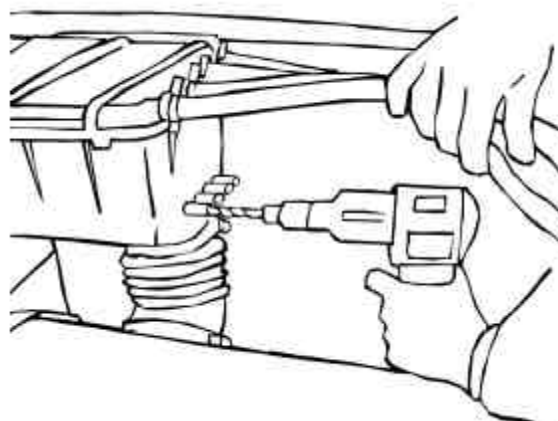
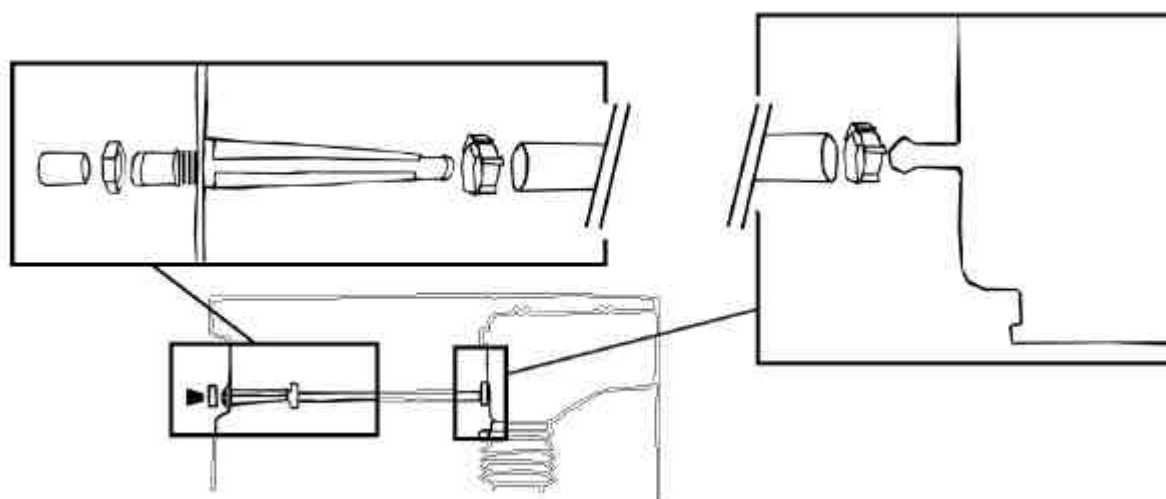


fig. 6

12. Fit the jointing screws as shown in **fig. 7**.
13. Insert the dosing kit tube caps into the external dosing product inlet jointing screws.
14. Install the 4 internal dosing tubes from the jointing screws to the dispenser entries. The hoses must be kept parallel between them.
15. Fit the 8 clamps to the end of the four hoses and tighten them.


fig. 7

16. Open the protection cover of the machine's electrical connection box.
17. Make sure that the supports of the external dosing relay board are well assembled.
18. Insert the external dosing relay board in the machine (**fig. 3/D**). Make sure that the supports of the relay board fit inside the holes.
19. Connect the **X9** plug from the wiring enclosed in the kit, to the corresponding terminal at the board as indicated in **fig. 4**.
20. Connect the white plug from the relay control wiring to the external dosing relay board (**fig. 3/E**). The new wire has the right dimensions. If you have carried out all these operations correctly, the wiring will fit without being forced, next to the group of wires. The two ends of the wires should not be too tight. If you install the external dosing kit for the future, it is advisable not to connect the white terminal to the relay board until you are going to use it.
21. Extend the new wiring following the direction of the existing wiring in the machine. See **fig. 2**.
22. Clamp the new wiring next to the existing one.
23. Close the electrical wiring protection cover of the machine.
24. Fit the top cover.
25. Open the front part of the washing machine with the key.
26. Carefully fit the clamping screws (**A and B fig. 1**) of the top cover. Make sure that the top cover has been fitted correctly and that it is centred.
27. Make sure that no plugs have been disconnected from the board when you have screwed the two screws.
28. Close the washer's front panel.

1.3 Installation of the external dosing system

If you have assembled the external dosing kit, the washing machine already has the required elements to incorporate the external dosing system. The machine supplies the electrical signals associated to the entry of dosing product and the physical entries of the product. The pumping systems and the product tanks are not supplied with this kit.

(Only applicable to **COIN CONTROL** units). Access the **Mod2** menu (see **COIN CONTROL** Advanced Instruction Manual) and program the **dOS** parameter with **0**.

1.3.1. Electrical connection of the external dosing

1. Disconnect and mechanically lock the external automatic switch.
2. Open the electrical connection box protection cover of the machine to get to the external dosing relay board.
3. Drill the entry hole for the electrical signal wiring, using the right tool.
4. Insert the wires through the entry hole and connect them to the relay board, as shown in **fig. 13**. The relay outputs are free of power. Each output short circuits with the common (**COM**) at the moment of dosing. The duration of the dosing relays connection is 20 seconds each. The maximum current that each relay can support is 2 A (at 240V).
5. Fix the wiring hose with stuffing box.
6. Close machine supply protection cover.

1.3.2 Connection of the external dosing hoses

1. Locate the entries of the dosing product at the rear of the machine (See the technical specifications section).
2. Remove the tube caps and keep them so that you can re-establish the conventional dosing in the future.
3. Connect the product hoses to the nipples on the manifold.
4. Fix the dosing hoses to the washing machine with the right clamps.
5. Associate each one of the four external dosing electrical signals supplied by the machine to a different product entry. To associate correctly each product with its function, observe the icons in **fig. 8**.

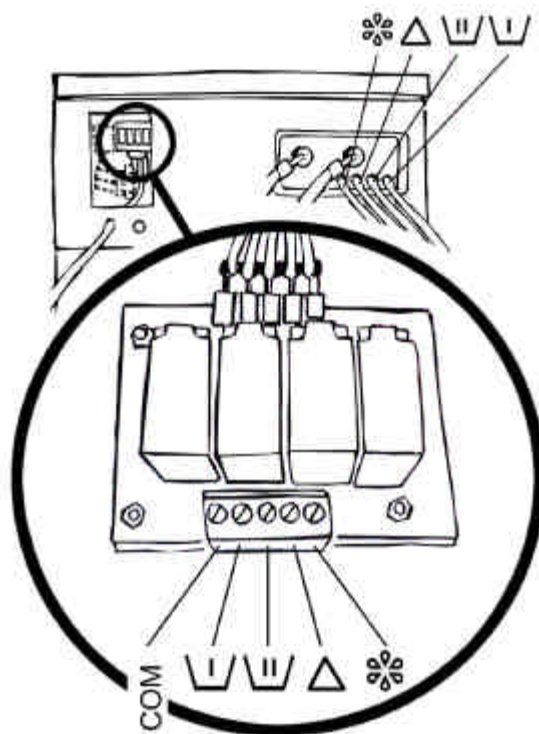


fig. 8

1.4 Re-establishment of the conventional dosing system

If you want to re-establish the conventional dosing system, you just have to place the tube caps supplied with the kit and block the four jointing screws of external dosing product entry.

If you want to dismantle the kit of external dosing for good, follow the instructions in section 1.2.3 and place the kit tube caps in the four entries of the dispenser drawer.

(Only in the **COIN CONTROL** machine). Access the **Mod2** menu (see the **COIN CONTROL** advanced instructions manual) and re-program the **dOS** parameter (re-program **2** if you have a lock system in the dispenser drawer / re-program **1** if you do not have the lock system)